

Te aki i te hunga tangata te tiaki inanga



What is the Whitebait Connection (WBC)?

Since 2002, WBC have been raising awareness of the effects of land-use on the health of our streams, rivers, estuaries and the sea, using whitebait as a medium.

Whitebait is a collective term describing the juvenile stage of five species of native freshwater fish that migrate from the sea to freshwater rivers and streams. Whitebait are one of the best examples of a native species which demonstrates the connection between land, freshwater and the sea.

The WBC is a freshwater environmental education programme that offers specialist advice around freshwater ecosystems and their critical role in sustaining life. WBC delivers interactive and holistic in-stream learning experiences where key environmental education concepts are explored, such as interdependence, sustainability and biodiversity. In doing so, participants develop sound knowledge and understanding of the environment as a whole, and an in-depth understanding of their local waterways. Personal and social responsibility for action, and recognition and respect for Māori concepts are also developed and nurtured.

Our Mission:

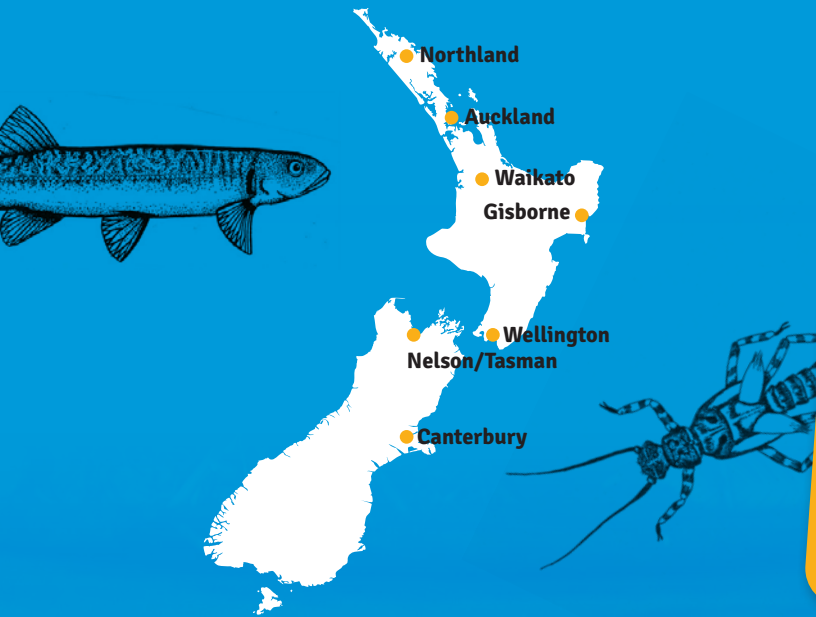
- To encourage active engagement of schools, tangata whenua and community groups in stream and catchment restoration throughout New Zealand.
- To support all participating groups using innovative and practical environmental education.
- To increase our knowledge of the distribution and abundance of freshwater fish throughout New Zealand including whitebait, other native freshwater fish, and pest fish species.
- To raise awareness of the effects of land-use practices on freshwater ecosystems.
- To strengthen the relationship between government departments, schools, community groups and tangata whenua.

Action outcomes

Participants are inspired to take action for their local catchment including riparian restoration, fencing, stream monitoring, writing letters to government and stream/river clean ups.

Where do we operate?

We have programme coordinators located throughout both the North and South Islands of New Zealand. Visit our website to find your nearest coordinator

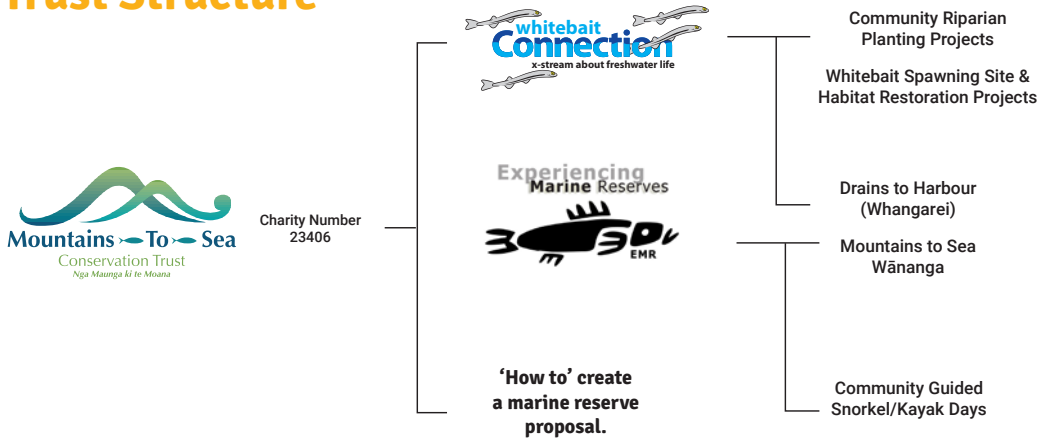


OUR OFFER

Please check out our website to see which of the following services are offered in your region.

- Freshwater Inquiry programmes for schools, kura and early childhood centres.
- National Inanga Spawning Education Programme for schools, kura and early childhood centres
- Inanga Spawning Site Surveys and Restoration advice and services
- Community group workshops
- Community events such as planting days, stream clean up days and information displays.
- SHMAK (Stream Health Monitoring and Assessment Kit) training for all ages
 - Stormwater education
- National Marine and Freshwater Wananga
 - Regional Freshwater hui

Our Trust Structure



To find out more about other services that our Trust offers, please visit the following websites:

whitebaitconnection.co.nz | emr.org.nz | mountainstosea.org.nz

Join us

As well as supporting the work that we do, by signing up to become a volunteer or sponsor, you will receive our newsletters and information on events. Check out our website to find out more or get in touch with us at our contacts.

E: info@whitebaitconnection.co.nz
P: (09) 4340289
M: 027 243 4818

www.whitebaitconnection.co.nz

Thank you to our sponsors



For our full list sponsors visit our website