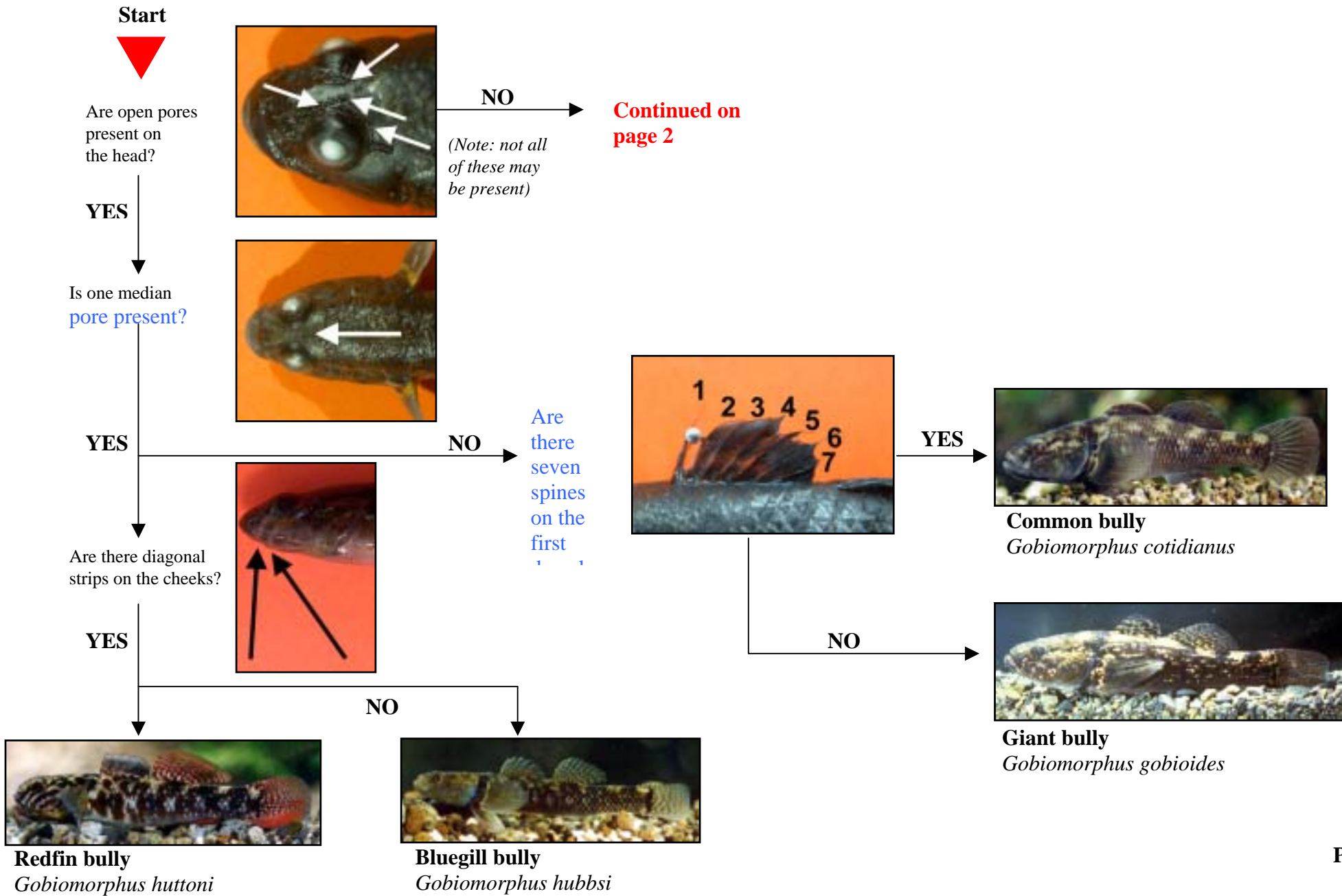


# Quick Guide to *Gobiomorphus* species

by Jody Richardson and Bob McDowall



Start



Page 2

Are there scales on the gill covers and isthmus?

NO

Do the pectoral fins have less than 16 rays?



YES

YES

NO

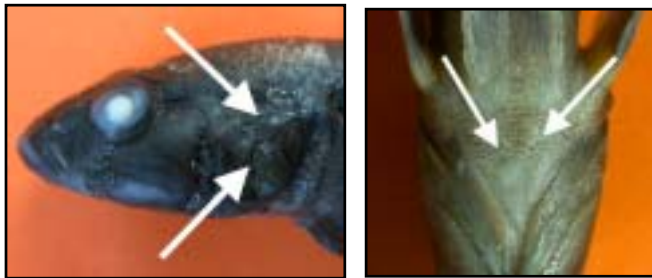
NO

Is the bully from the North Island?

YES



**Tarndale bully**  
*Gobiomorphus alpinus*



**Upland bully**  
*Gobiomorphus breviceps*



**Common bully**  
*Gobiomorphus cotidianus*



**Crans bully**  
*Gobiomorphus basalis*