



Experiencing
Marine Reserves



Mountains to Sea - Conservation Trust

The Northland-based Mountains to Sea Conservation Trust (CC23406) was established in 2002, as a charitable umbrella and support organisation for the Experiencing Marine Reserves (EMR) marine education and Whitebait Connection (WBC) freshwater education programmes. These are both leading models in education for sustainability in Aotearoa/New Zealand.

The Trust sees education as a vital part of society and central to all environmental restoration. Both programmes involve young people, their parents and the wider community.

Our programmes reinforce simple concepts such as the uniqueness of our freshwater and marine biodiversity and provide an active focus on conservation of these environments through education and action.

Our goal is to empower and support communities to achieve marine and freshwater conservation through science based experiential programmes, resources, projects and community engagement.

Our programmes focus on schools as a focal point for communities to come together and see the future of marine and freshwater through the eyes of their children, thereby motivating meaningful learning and long-term behaviour change in both today's and tomorrow's generations.

"It is great to know that there are lots of people out there teaching us how to care for the colourful sea creatures in the ocean, when I am older I want to be a snorkeler like you, I cannot wait!"

"I love learning about the interconnectedness of it all. The way the water connects the mountains to the sea and the people too."

"These kids are the future users and guardians of Tangaroa. With awareness of what natural abundance looks like and how far we have come from it, they're better placed to care for it throughout their lives. We think the conservation education work Mountains to Sea Conservation Trust is doing is invaluable, long may it continue."

Dean Wright - Supporter

"The practical science approach that the Whitebait Connection apply to their work is readily understood and appreciated by landowners who are able to see a direct connection between what they do on their land and the effects on inanga (whitebait) and other wildlife."

Kevin Adshead - Supporter



Whakamana te maunga Whakamana te wai He mauri o ngā tangata Ngā mea katoa he pai

If we look after the water from the mountains to sea, it will look after us. It is our life force.

Leave a lasting legacy in Northland

- Marine and freshwater educational opportunities for all ages
- Marine and freshwater restoration projects
- Community engagement
- Inspiring the next generation of kaitiaki (guardians)



Our partnership with Northland Foundation

Northland Foundation was originally established in 2004 (as Northland Community Foundation) - created by and for the people of Northland. Their goal is to provide a simple, effective and long-lasting way for people to give to local causes now and in the future, through a mix of endowment funds and living giving.

**Northland Foundation make it easy
for you to give to us!**

www.northlandfoundation.org.nz

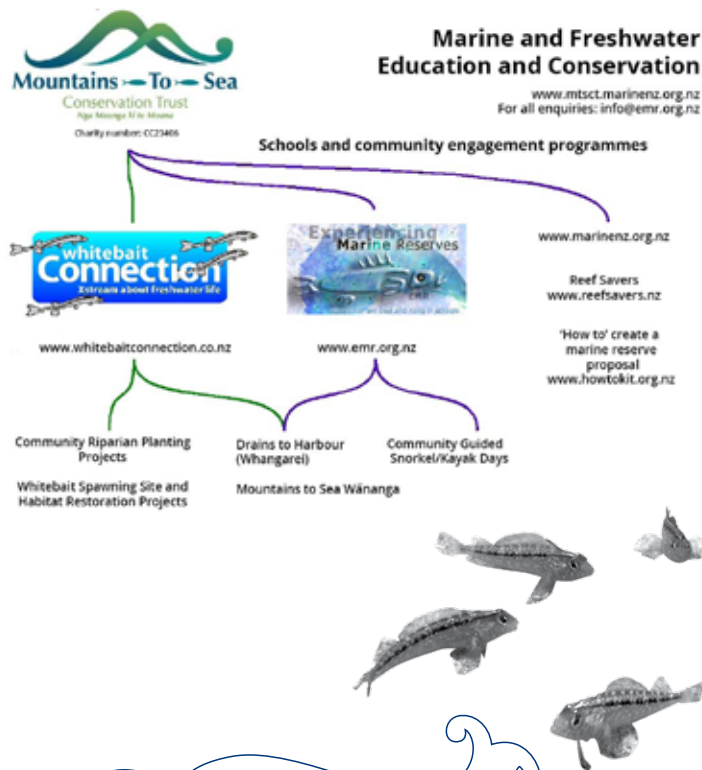
P: 09 459 6327

E: info@northlandfoundation.org.nz



Our Marine and freshwater conservation services:

- Provide quality science based experiential education opportunities to schools, communities and professionals.
- Guided classroom exercises and field trips to freshwater and the ocean, including guided snorkels and freshwater discovery
- Encourage action and support for marine and freshwater conservation in New Zealand
- Provide schools and communities with the expertise and knowledge to experience their local marine and freshwater environments first-hand, leading to understanding of local conservation issues and fostering kaitiakitanga (guardianship).
- Support and create opportunities for young environmental professionals.
- Support the pursuit of scientific research, understanding and traditional knowledge of aquatic ecosystems and biodiversity.
- Technical and scientific assistance to schools and community groups
- Volunteer placement
- Educational resource development
- Location and restoration of Inanga (whitebait) spawning areas
- Complete Risk Assessment and Management and emergency procedures for all activities



Community engagement:

- Seaweed, World Wetland Day, World Fish Migration Day and Conservation Week events
- Community guided snorkel days, riparian planting and native fish spotlighting
- Helping as many people as possible to 'experience' a marine reserve, the marine and freshwater environment and take action for it.
- Freshwater and marine monitoring projects
- Provide regional marine and freshwater unique and innovative conservation engagement events

Detailed programme information and details on our national areas of operation are available on our programme websites www.emr.org.nz and www.whitebaitconnection.co.nz and www.mountaintosea.org.nz or email us at info@emr.org.nz

www.facebook.com/emr.mtsct www.facebook.com/drainstoharbour www.facebook.com/whitebaitconnection www.facebook.com/waitaua