



Mountains To Sea
Conservation Trust
Nga Maunga ki te Moana

MTSCT Annual Report

2023



Table of Contents

Table of Contents	2
Message from our chairperson	3
Governance and Executive Leadership Team	5
Trustees	5
Advisors	5
Poutokomanawa - Co-Directors	5
Honoured Patron - The late Dr Roger Grace	5
National Outcomes	6
Highlights	7
Challenges	9
Quotes from students and the community	12
Programme updates	14
Experiencing Marine Reserves (EMR) - Te Kura Moana in Northland/Auckland	14
Whitebait Connection (WBC) in Northland/Auckland	15
Marine monitoring and advocacy	15
Celebrating Seaweek - Te Ika o te Tau (Fish of the Year)	16
He Kākano	16
Northland Īnanga Spawning Habitat Restoration Project (NĪSHRP)	18
Financials	19



Message from our chairperson

Kia ora koutou,

It is a real privilege to be chairperson of the Mountains to Sea Conservation Trust and highlight in this brief report the extraordinary amount of mahi delivered over the last 12 months that supports the vision of the Trust. It is also somewhat daunting, not only because there have been so many achievements to acknowledge, but with growth of any organisation there are challenges. We are also operating in a climate emergency. Climate change is the biggest threat nature has ever faced, and it will influence the significance of, and the shape of, the Trust's mahi in the future. The spread and impact of invasive species and diseases is one example.



As a Board we have work to do to support the growth and the future of the Trust. I am thrilled to welcome our new trustees Vicky Vajda McNab, Patrick McCann, and Finley Duncan to the team. Thank you for volunteering your time and joining our whānau, together you bring some essential experience and enthusiasm. On behalf of the Board, I want to acknowledge and thank our trustees that have stepped down, Manuel Springford, Matt Keene, and Geoff Butturini. Your mahi over the years has helped shape the Trust to where it is today.

Despite now operating in a post covid restriction free period, Aotearoa like most of the world has experienced more extreme climatic events this last year. These extreme weather events are likely to continue, so the mahi the Trust does, especially the restoration work which builds resilience into our life-supporting ecosystems is essential. Notwithstanding these extreme weather-related challenges our two leading programs – Experiencing Marine Reserves (EMR) and Whitebait Connection (WBC) have both had a successful year and I'd like to highlight a few standout achievements.

Starting with EMR, for 2022/2023 nationally nearly 17,500 people snorkelled and experienced a marine reserve, rāhui or unique marine or estuarine area, and most got to see firsthand the benefits of marine protection. Samara, you and the whole EMR team should be incredibly proud to have reached nearly 26,000 people across Aotearoa. Every year these statistics go up, since 2001 the EMR program has reached over 250,500 people. Another important acknowledgement is the marine mahi for rangatahi kaupapa. This kaupapa provides mentorship, volunteer experience, development of new skills, knowledge, and ultimately opportunities for career pathways.

WBC also had an incredible year. For 2022/2023 nationally over 9,000 people were engaged by the program, nearly 8,000 native plants planted, 20 new critical inanga spawning sites were adopted, and 150 action projects were undertaken by students, community groups and iwi/hapū alongside the WBC team. A statistic that sticks out, is that since 2001 across Aotearoa 161 critically important inanga spawning sites have been adopted. Another important project to highlight is the success of the Northland Inanga Spawning Habitat Restoration Project (NISHRP). I recently got some firsthand experience with this project. NISHRP is making a significant difference in Bream Bay and is not only well on track to reach its objectives but will in many cases surpass them. A big thank you to all involved including the Patuharakeke team.

I've only been able to highlight a fraction of the mahi the Trust delivers. What stands out is that these achievements are even more impressive given the Trust's Health and Safety record engaging with that many people. Samara, I need to acknowledge the significant amount of Health and Safety mahi you do behind the scenes, and the skills of our contractors across the country.

This time last year I got to acknowledge the confirmation of the \$18 million dollars from the Ministry for the Environment as part of the Essential Freshwater Fund. Kim, you and the team have started the roll out of our nationwide Wai Connection 'Tatai ki te Wai' project. This project aims to directly support 100 catchment groups and will have meaningful outcomes for nature and our freshwater life-supporting ecosystems across Aotearoa. This is a huge opportunity for nature and has allowed the Trust to grow significantly. Thank you for all the hard mahi Kim progressing this project including hiring the new Wai Connection Project Manager Holly Cole, who we look forward to working with in

2024 and appointing Sheila Taylor (trustee) as Project Executive. As a Board we are excited to see how this project progresses.

I've had the pleasure to attend a couple of Auckland and Northland community events this year with my sons, and I need to highlight the passionate volunteers both EMR and WBC have. Combined EMR and WBC nationally had nearly 17,500 volunteer hours. These events wouldn't be possible without volunteers, and it is a testament to the mahi being delivered and the incredible contractors we have around Aotearoa that so many people are willing to donate their time to EMR and WBC.

The Trust has always had a big vision and the WBC and EMR programmes continue to inspire not only the next generation of leaders, our tamariki, but everyday New Zealanders. The achievements over the last 12 months are making a real difference out there in terms of freshwater and marine conservation education and are a testament to both our Poutokomanawa/Co-directors, Kim and Samara and the teams across Aotearoa. Kim and Samara, on behalf of the Board I want to say a big thank you. You are both incredibly talented women that continue to surpass expectations.

I also want to acknowledge and thank one of the Trust's founders Vince Kerr, who is still incredibly active and supports the mahi of the Trust. The work you do to support marine conservation such as with Te Whānau Moana/Te Rorohuri hapū of Ngāti Kahu and the Maitai Bay rāhui is just one example. This hapū lead, Trust supported project is a model that could be applied throughout Aotearoa especially given the political climate, the status of marine reserves and outdated legislation and policies, and our obligations under Te Tiriti o Waitangi. There is a growing opportunity to support iwi/hapū groups and communities across the country to implement alternative coastal marine protection tools to restore our degraded marine ecosystems, lost habitats and biodiversity and restore the mauri (life force) of moana. Imagine if by 2030, the Trust is a leader helping to deliver 30% protection in partnership with iwi/hapū and community groups. With less than half a percent of Aotearoa's marine environment currently protected, the Government's commitment to 30% by 2030 is an opportunity for the Trust.

Financially the Trust has work to do to achieve long-term sustainability, but we have still had a successful financial year. I can't thank all our funders, but I would like to acknowledge a few including Foundation North, Tindall Foundation, Bobby Stafford-Bush Foundation, Department of Conservation, Ministry for the Environment, Lotteries NZ, Water Safety NZ, Wettle Wetsuits, WWF NZ, Northland Regional Council and Auckland Council. Thank you for supporting the Trust.

Lastly, I need to thank my fellow trustees for their commitment to the Trust and significant volunteer hours. Sheila (Treasurer), thank you for your financial oversight and support you have provided Kim, Hollie, and Samara over this last year, especially with financial reporting and the transition to Xero. Our Board of Trustees has had a busy year and 2024 will be even more demanding as we start to deliver our Board goals. While the growth of the Trust is an amazing opportunity this does come with some strategic, structural, financial, and social challenges. These will need to be navigated with care and attention to detail. However, I am confident the Board with the support of our Poutokomanawa/Co-directors can achieve this.

Noho ora mai,



Katrina Goddard
Mountains to Sea Conservation Trust Chairperson



Governance and Executive Leadership Team

Trustees

Katrina Goddard - *Marine Science and Policy Portfolio (Chairperson)*
 Jean-Louis Ecochard - *Marketing Portfolio*
 Sheila Taylor - *Business and Financial portfolio (Treasurer)*
 Dr. Olivier Ball - *Science Portfolio*
 Arla Kerr - *Legal Portfolio (Deputy Chairperson)*
 Vicky Vajda McNab - *Communications and Education Portfolio (Secretary)*
 Patrick McCann - *Health and Safety Rep*
 Finley Duncan - *Policy and Compliance Portfolio (Privacy Officer and Deputy Treasurer)*

Advisors

Vince Kerr - *Marine Science and Advocacy*
 Manuel Springford - *Te Waha Māori*

Poutokomanawa - Co-Directors

Samara Nicholas - *MNZM, foundation member of Mountains to Sea Conservation Trust, Experiencing Marine Reserves (EMR) founder and marine lead*
 Kim Jones - *Whitebait Connection (WBC) freshwater lead, Wai Connection, Drains to Harbour (DTH) and National Īnanga Spawning Project (NĪSP) founder*

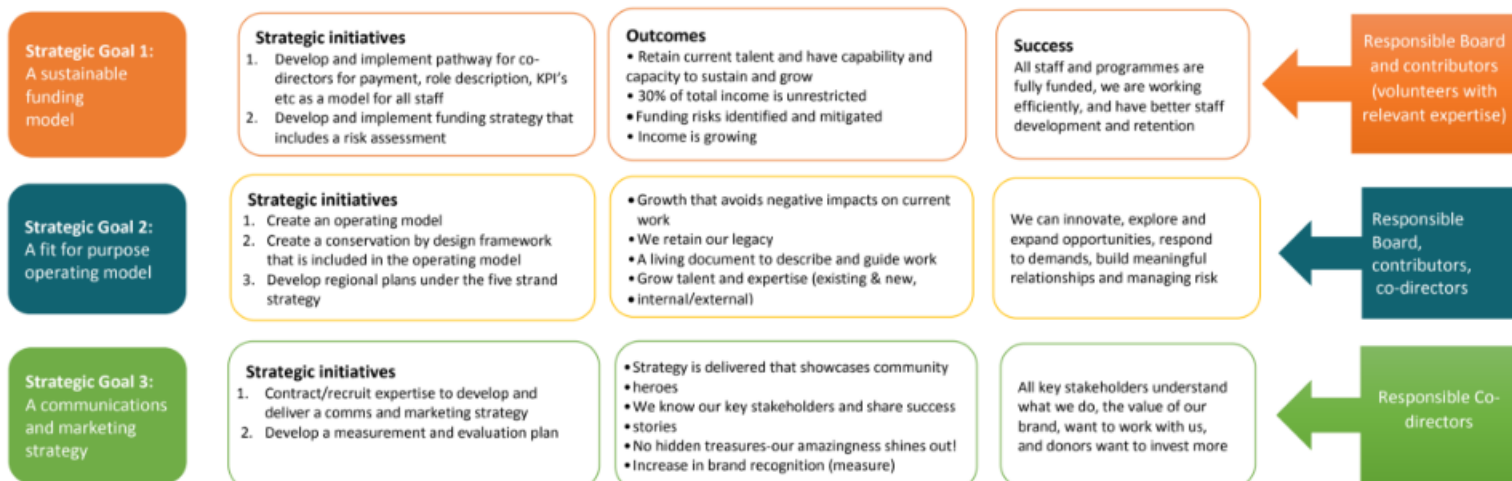
Honoured Patron - The late Dr Roger Grace

A [memorial fund](#) has been established and is administered by Mountains to Sea Conservation Trust. Moe mai rā rangatira ❤️



Mountains to Sea Conservation Trust Strategic Plan 2022-2025

Our Vision is to see our biodiversity –the ocean, coastal areas, streams, lakes and wetlands–as respected taonga (treasures) and as part of a connected system. We believe that restoration of any part of the system supports the entire system, and we view education as central to environmental restoration



National Outcomes

Our Mountains to Sea (MTS) programmes have continued to achieve significant national outcomes since 2001 and we have also achieved some great outcomes in the 2022 - 2023 season. A full breakdown of national outcomes for both the WBC and EMR programmes can be viewed on pages 12-15.

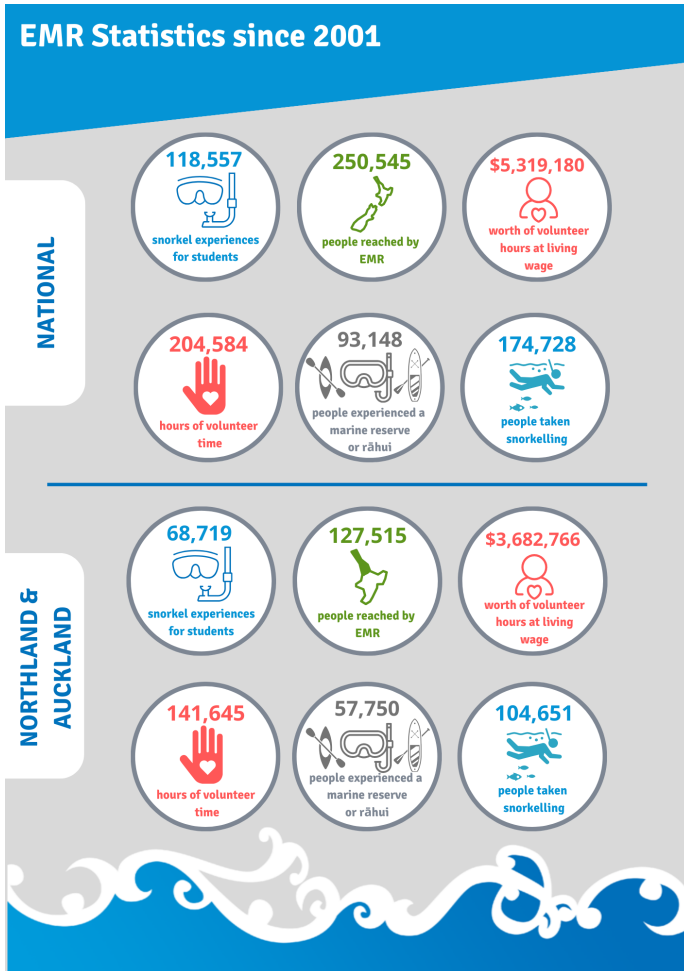
In summary, since 2001 our WBC programme has resulted in 139,469 trees being planted along 55.72km of riparian habitat, with a total programme reach of 129,015 people, and 161 īnanga spawning habitats identified and adopted.

EMR has taken 93,148 people into NZ's marine reserves and over 41,187 people have been engaged in EMR organised marine conservation events. A total of 174,728 people have snorkelled with EMR. The total number of Kiwis engaged in EMR has now reached 250, 545.

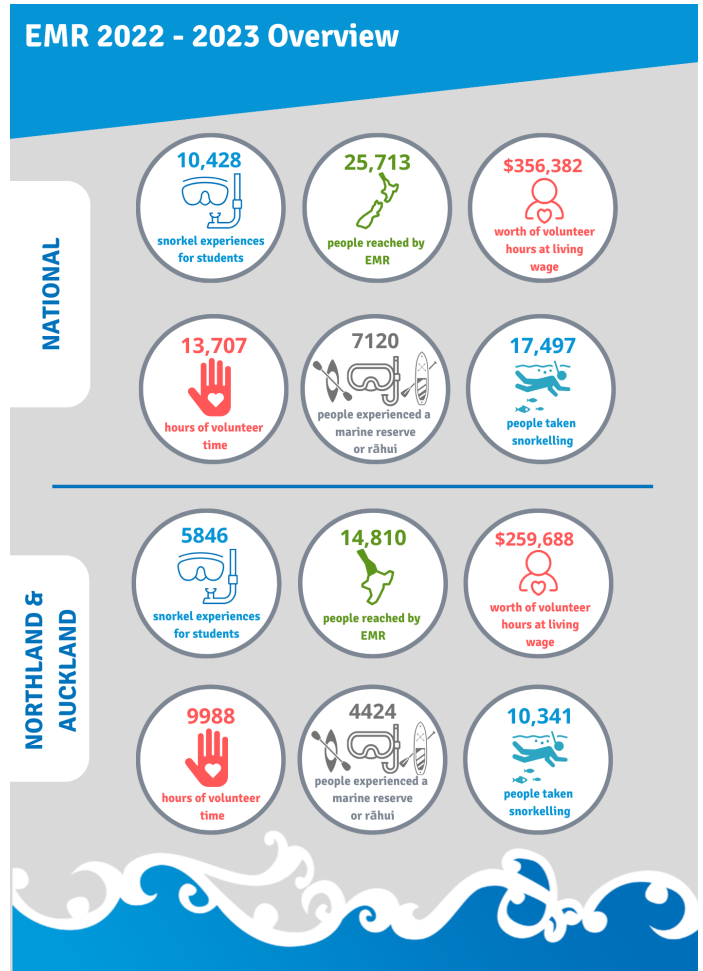
Collectively, over 302,338 hours of volunteer time valued at \$7.86 million (at living wage) have been contributed to our MTS programmes thanks to the constant support of our dedicated volunteers.



EMR Statistics since 2001



EMR 2022 - 2023 Overview



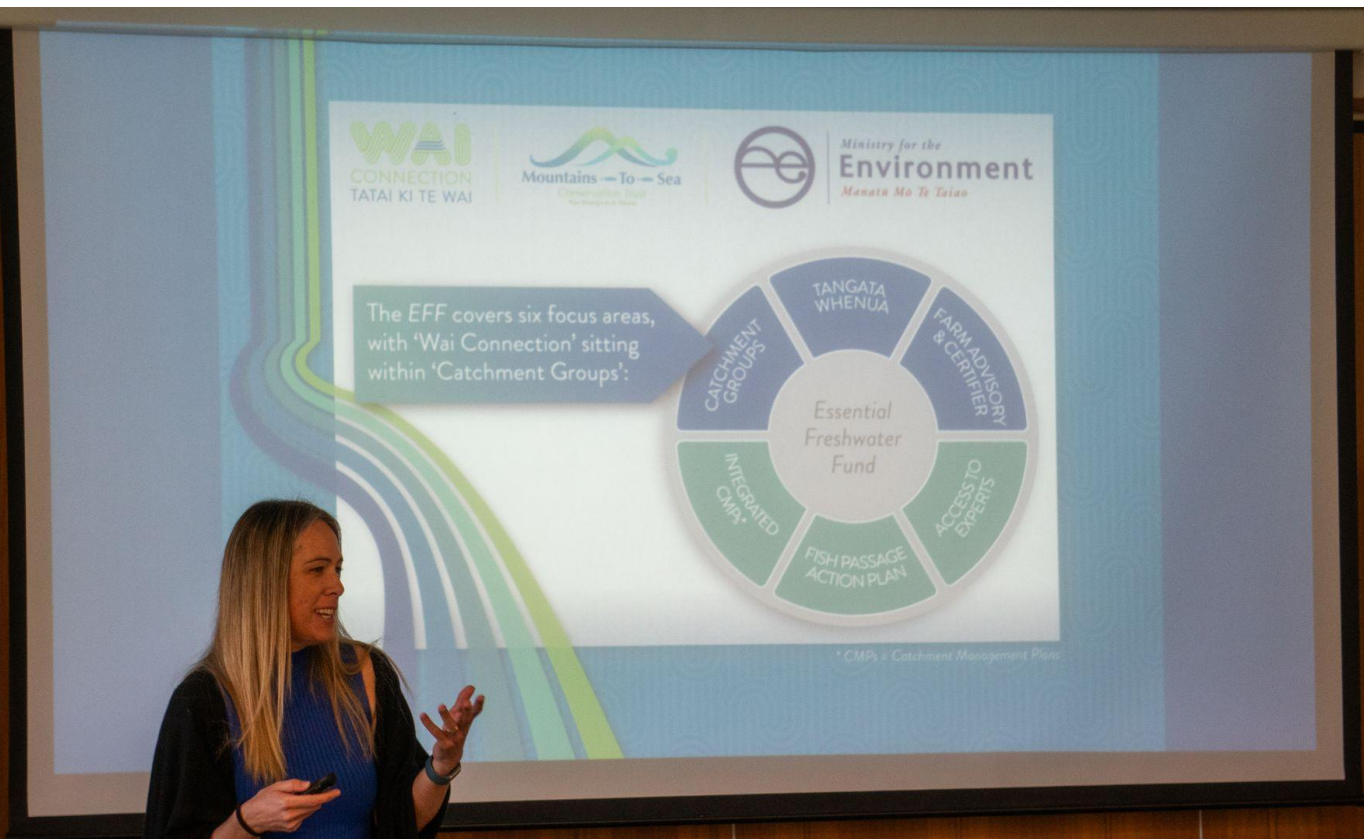
Highlights

This year we celebrated many big picture outcomes, here are a few of them!

- In early 2023 we announced the roll out of our nationwide Wai Connection - 'Tatai ki Wai' project. This Mountains to Sea Conservation Trust (MTSCT) led project will support community catchment group engagement and has been funded through the Ministry for the Environment's (MfE) Essential Freshwater Fund (EFF). It will provide direct support to 100 catchment groups across Aotearoa and thousands of people through wider community engagement, aimed at supporting building collective knowledge and locally led land management practices that cultivate healthy waterways from the mountains to the sea. This project aims to build connection, capacity and capability across Aotearoa through our network of Mountains to Sea Provider Organisations and partners.
- Continuation and expansion of our Mountains to Sea programmes in eleven different regions including: Northland, Auckland, Tairāwhiti Gisborne, Hawkes Bay, Taranaki, Wellington, Nelson, Tasman, Canterbury, Taranaki and Rakiura.
- Our 22nd Annual Poor Knights Competition trip took place in May. Students came from as far north as Peria (Kaitaia) and as far south as Dunedin to experience one of Aotearoa's oldest marine reserves. Since 2002, we have taken representatives from 399 schools, totalling 563 students! Each student attends with a parent or guardian. We also had some second generation students attend as guardians.
- Completion of Year One of the Northland Īnanga Spawning Habitat Restoration Project, which is largely funded through the Ministry for the Environment's Freshwater

Improvement Fund and involves region-wide collaboration and impact. More on that later in the report.

- Supporting our new WBC cadets in their roles in Northland. Our 2022 WBC cadet Tracey Phillip graduated to become a fully endorsed lead programme coordinator and is now delivering WBC, supporting the delivery of NISHRP and also is an endorsed EMR coordinator in Northland. Our 2023 cadet Greer Morgan also graduated to become a fully endorsed lead programme coordinator and has taken on the role of a Catchment Coordinator and Catchment Connector in Northland under Wai Connection.
- *Marine Mahi for Rangatahi* supported taitamariki/rangatahi to develop new skills and opportunities for career pathways. This has led to Noah Edwards receiving SCUBA training opportunities and work placement thanks to Dive Tutukaka. Noah won the *Youth environmental leader award at the 2023 Whakamānawa ā Taiao – Environmental Awards*.
- EMR action projects this year included monitoring rimurimu with the Love Rimurimu project in Wellington, rahui monitoring, comparison of marine species at different areas, invasive species research, a kina barren board game, litter blitz with Sustainable coastlines, informative video about the impacts of microplastics and the local rāhui.
- EMR actively encourages schools and communities to contribute to existing databases like iNaturalist. EMR has over 1053 recorded observations.
- Continuing support of Patuharakeke kaitiaki with their water quality and biodiversity monitoring projects in their rohe at Takahiwai and working together to achieve community engagement and freshwater improvement outcomes on the Ruakākā River.



- EMR Northland and Reotahi featured on an international Youtube channel (1).

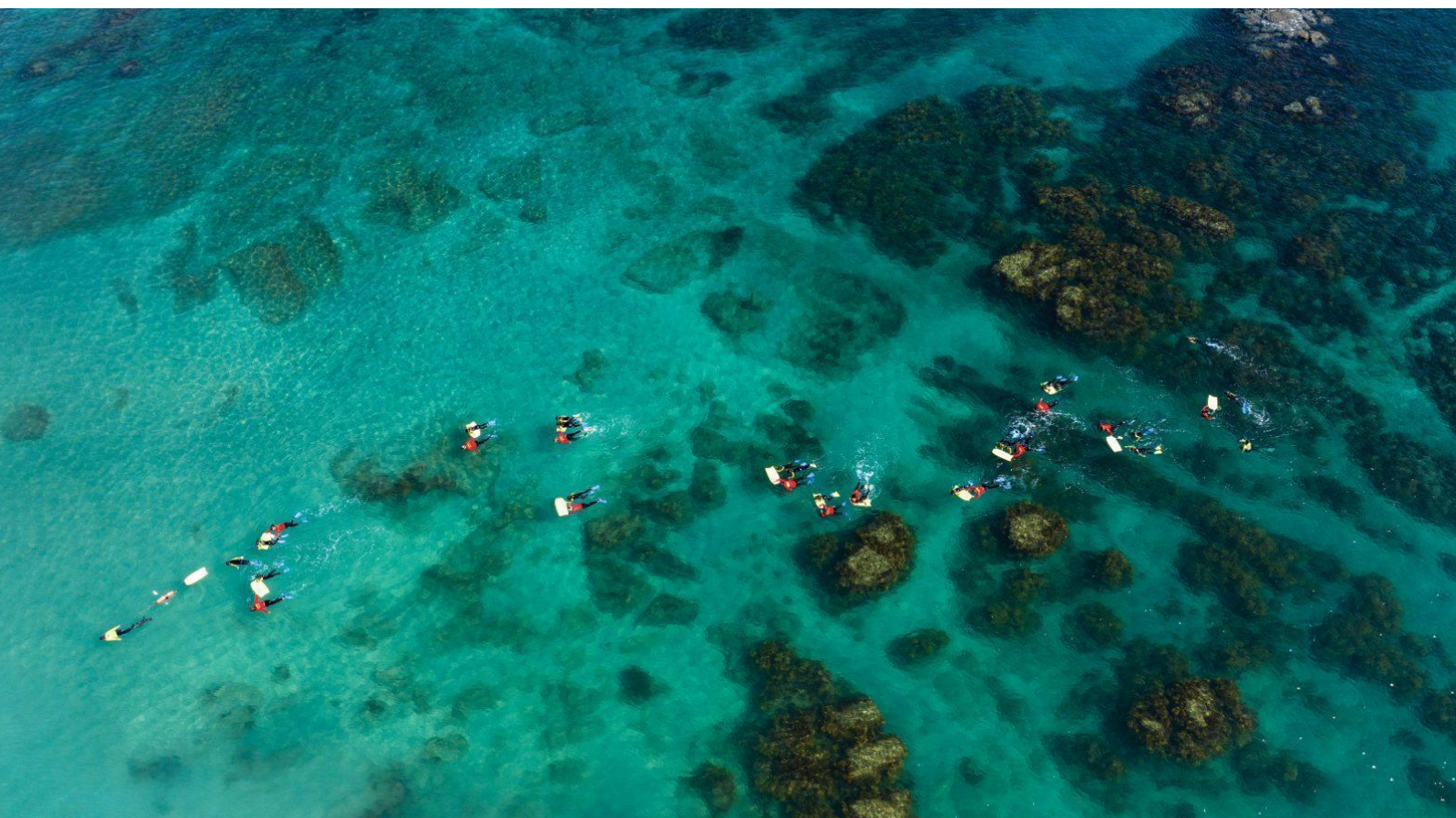


- EMR featured in the [New Zealand Geographic](#) 'Taking on Water' which shares stories of Aotearoa's marine reserves and the complex history and future of marine protection in Aotearoa.

"Since 2001, a programme called Experiencing Marine Reserves has immersed school students in the moana, teaching them about marine conservation and providing hands-on experience in the ocean. Here, they venture across the reefs at Goat Island Marine Reserve—New Zealand's, and perhaps the world's, first marine reserve. It now hosts 300,000 visitors every year, many coming for their first look at a relatively intact marine ecosystem."

Read the full article here: <https://www.nzgeo.com/stories/taking-on-water/>

 www.depth.co.nz



Challenges

Flooding, poor water quality and unpredictable weather! It has been a year of extreme weather and our team has been feeling the impacts. As acknowledged by our Chair earlier in this report, we are also operating in a climate emergency. This influences the significance and direction of our work and how we operate. The spread and impact of invasive species such as Myrtle Rust, Caulerpa and the Golden Clam are just three examples of biosecurity risks that have needed to be addressed by our teams this year. We are adapting and building our systems and processes to meet these challenges and ensure the health and safety of our team and all those that we work with.

Another big challenge the Trust faces is meeting the demand for our services whilst growing in a sustainable way that continues to serve our people and environment in the best possible way without losing our uniqueness. We must ensure strong infrastructure and processes are in place to support national growth and a regional approach that offers tailored solutions at place. With ongoing leadership complemented by the level of community support we are privileged to receive; we are committed to continue to deliver quality programmes.

We have been very fortunate to receive funding for growth through the Wai Connection project, but given the short timeframe for implementation this also creates added risks:

1. Expanding to new partners increases the risk of miscommunication, uneven delivery at source, and increases the administrative and management burden as well as multiplying the 'unknowns'. These are operational as well as brand risks for the Trust.
2. Creating and implementing new systems and processes and upskilling at pace creates more room for error.
3. Larger funding amounts with short cycles create the old boom/bust funding issue writ large, along with the known impact on the ability to secure and adequately support high achieving teams.

To mitigate these risks the Trust has been very careful to implement change in stages, including a stage gate for the funding and staggered onboarding of regional partners.

Adhering to our core value of *Collaboration* has also been key, using a co-design process wherever possible to ensure we are aligned with partners and teams through the work as well as in principle.



Quotes from students and the community

"Thank you for taking me on the best experience of my life so far. It was my first time at the Poor Knights and I liked all the different types of diversity of fish and seeing the schools of blue maomao swarmed around me. It was really exciting to be picked and it felt really special even though I didn't think I had done much. I am an enviro leader and help do litterless lunches.

I'm doing overfishing and raising awareness for my action project. I'm not sure of my plan yet but I am planning now. The Poor Knights were definitely a lot different than my local area. My local area has lots of mud and my local area could look more lively if we banned fishing." **Ollie Smith - St Thomas School - Auckland**



Lakeview Stream Day

"I really liked the snorkelling. There were so many snapper and when we were in the shark cave and came out into the sun the snapper looked very shiny and cool. We also saw a fish on the rocks and a grey fish swimming through the seaweed. I liked shooting the video for my project and all the jokes were mine." **Cormac McAvinue - Ballaclava School - Otago**

"A highlight of the trip for me was experiencing first hand the abundance and friendliness of fish inside the marine reserve. Because of the safety the reserve provides, you can observe so many different kinds of fish up close which is an unparalleled experience. It has inspired me to speak up in my own personal life to educate people around me and advocate for the existence of more marine reserves." **Bella Tissink - Whangārei**

"I really appreciated the chance to connect with a lot of like-minded people. I really liked that our tamariki got to connect with the EMR staff and got further insight into this mahi. Also I really appreciate the EMR team correctly pronouncing Te reo and including tikanga and local stories into teachings about marine biology and biodiversity." **Ken Taiapa - Taranaki**

"You have done a great job teaching us kids about the water, my friends and I have been taking much more action to clean up our environment!" **Jessica, One Tree Point Primary School - Northland**

Taipa Area School students at Maitai Bay



Meadowbank students exploring Goat Island Marine Reserve



"We loved the whole programme and are very thankful for being able to take part and we are proud of ourselves for fundraising for our littatrap" **Jackie, Greenhithe School - Auckland**

"I really loved being a part of the Whitebait Connection even if it was just for a day. I would love to do it again someday!" **Aaron - Russell School - Northland**

"The programme was excellent, we appreciated the information and hands on experience it provided for our tamariki. It was delivered in an appropriate way that was enjoyed by our tamariki and our kaiako" **Lynette - Torbay Kindergarten - Auckland**

"As a class we loved our learning with Briar. The creek visit where we tested water, looked at the clarity, and discovered aquatic life was brilliant. The students have since visited the creek regularly to look for more life as a result. She was always organised and on time. We loved her knowledge, enthusiasm and passion for the outdoor environment and helping us be better at looking after NZ's waterways" **Karen - Puawai Montessori - Auckland**

"Our Whitebait Connection experience was fantastic!! Patricia was amazing!! Kids learnt lots, and had fun whilst doing it. Thank you so much!" **Tineke -Whangārei Heads School - Northland**

Briar Broad (Auckland Regional Coordinator) installing artificial inanga spawning habitat on the Puhoi River



Programme updates

Experiencing Marine Reserves (EMR) - Te Kura Moana in Northland/Auckland

This season we delivered 59 community snorkel and kayak events,, supporting 4829 people to safely connect with the wai in Northland and Auckland We continued to engage taitamariki/rangatahi as snorkel guides and ran training events in Whangārei, the Far North, Auckland, Tairawhiti (Gisborne) and Wellington.

EMR provided hands-on training for these guides during pool sessions in pools with additional ongoing practical training in the field. This has attracted active youth engagement in our programmes, also becoming water safety ambassadors. Taitamariki helped at all of the events over the summer of 2022/23 and we are set to provide similar training opportunities with pathways into marine conservation and careers for 2023/24. In Northland,

more than 3994 people were engaged in snorkel experiences. EMR reached 3104 students of all ages from a variety of backgrounds. Many of these students were able to see the effects of marine protection first hand through snorkeling in a marine reserve or protected area. In addition to this, 890 members of the public participated in EMR community snorkel or kayak days with 1085 volunteer hours helping out during the events. Our reach in Northland this season was 4948.

Auckland had another extremely busy season, finally being able to deliver free of any lockdowns but with new weather based challenges. Despite substantial

distribution from multiple flooding and cyclone events the Auckland EMR team was able to deliver 15 full Mountains to Sea Programmes, 20 casual snorkel experiences, three spotlighting events, three volunteer training days, two marine monitoring workshops two stand-up paddleboarding days, 10 kayak days, and 12 snorkel days.

The Auckland team also trialled their first ever night snorkel at Enclosure Bay and then again at Torbay to great success.

Through our school programmes we reached a total of 2,721 students, teachers and whānau with 2,394 additional community members reached through our events. Our epic team of volunteers donated 1850 hours of their time, with an additional 3900 donated by school student's whānau.



Whitebait Connection (WBC) in Northland/Auckland



Hikurangi School students watching the release of a longfin tuna

WBC engaged with a total of 6,234 people across Northland and Auckland during the 2022-23 season, 5,202 of which were students, parents and staff participating in 72 WBC school programmes. 1,032 people from the community were engaged in 27 community engagement events.

A total of 66 action projects were undertaken by students, community groups and WBC, including the planting of 5,460 native plants along waterways, adoption of 20 new īnanga spawning sites, and 8 records uploaded to the NZ Freshwater Fish Database. We celebrated the completion of year 1 of the 3 year collaborative region-wide Northland īnanga spawning habitat restoration project (NISHRP).

Marine monitoring and advocacy

MTSCT and EMR continue to work closely with Te Rangi-i-Taiāwhiaotia Trust to support the Maitai Bay rāhui that was established in late 2017. The rāhui aims to restore marine life, the bays' tapu and mana, and to implement a sustainability plan for future generations. The website is now up and running at rahuimaitaibay.nz. This year the Govt announced they will be implementing new legislation to create 19 new marine protected areas and have created a fisheries plan for Tīkapa Moana - the Hauraki Gulf.

This process was started in 2013 & so much mahi has lead to to this announcement including from our late founding trust member Dr Roger Grace who contributed significantly to the development of these protected areas with our current chairwoman Katrina Goddard, who was on the Hauraki Gulf stakeholder group who wrote the marine spatial plan. While the fisheries plan hasn't banned destructive fishing methods like bottom trawling which cause significant habitat loss, this package is a step towards restoring the mauri/ lifeforce & health of the Gulf.

Two existing marine reserves at Leigh and Cathedral Cove are to be extended; and new marine protected areas where customary fishing can occur will be established. We are delighted that this will include the sea around Ōtata island and the Noises.

We look forward to exploring these new protected areas in the future. EMR has been visiting Leigh, (NZs first marine reserve) for over 20 years with students and whanau, this extension to the reserve is welcomed as it will protect important spawning sites for fish like snapper and have significant biodiversity gains which we are excited to share with future participants!



Wednesday Davis assisting Sophie Journee to run a marine monitoring workshop on Rakino Island

Meet the 2023 Fish of the Year Winner!
**OCEANIC
MANTA RAY**

Experiencing
Marine Reserves

Te Kura Moana

Our te ika o te tau | Fish of the Year winner for 2023 is the ocean voyaging, ever graceful oceanic manta ray (*Mobula birostris*)!

TE IKA O TE TAU
2023

Backed by:
LIVE OCEAN



emr.org.nz/fish

Celebrating Seaweek - *Te Ika o te Tau* (Fish of the Year)

Seaweek - *Kaupapa Moana* took place in the second week of March with many events nationwide celebrating our ocean. Like every year, EMR has contributed significantly to the success of Seaweek. EMR's annual Fish of the Year/*Te Ika o Te Tau* competition aims to raise awareness for some of the issues our awesome ika face and teach people about the incredible biodiversity in our freshwater and marine environments. Voting was open to the public between the 4th of March to the 31st March 2023.

He Kākano

The He Kākano community native plant nursery in Whangārei continues to produce approximately 8,000-10,000 plants annually for riparian restoration projects around the Whangārei Harbour and the Ruakākā/Bream Bay catchment. The nursery also continues to play host to nursery workshops, community hui, and hosts volunteer workdays every Friday.

Since the discovery of myrtle rust on the large pōhutukawa that overhangs the nursery we have developed and included protocols for eliminating the spread of the disease on our outgoing plants. After consultation with several leading NZ experts in plant pathogens, we have a system set up for flushing and quarantining all our plants before they leave our site. We have also decided, for the time being, to no longer propagate myrtle species at He Kākano, and these will be replaced with other suitable fast growing native coloniser species. All existing myrtle seedlings at He Kākano will be destroyed as per the guidelines set out by MPI. Additionally, we have also decided to branch out into the propagation of species specifically for the restoration of īnanga spawning sites. These will include Oioi, Wiwi, and Toetoe, amongst others. These are a first for He Kākano and will greatly improve our ability to enhance īnanga spawning sites across our priority catchments.



With the 2023 planting season coming to a close, we have sold our remaining plant stock to the Recreational Services division of the Whangārei District Council (WDC). These were plants that were earmarked for planting in Bream Bay but that did not go in the ground this season whilst we came up with a way to deal with the myrtle rust. Now that we have a solution, these plants are being flushed and quarantined and will soon be used by WDC for planting around Whangārei.

Lastly, work is almost complete on the refurbishment of the other buildings on the site in First Avenue. These are to become an Eco Hub for environmental groups. The three main tenants include EcoSolutions, F.O.R.C.E., and Whitebait Connection. We will have a permanent office in the building for MTSCT staff, and will be able to host our Board, Governance Group, and team meetings in this new space.

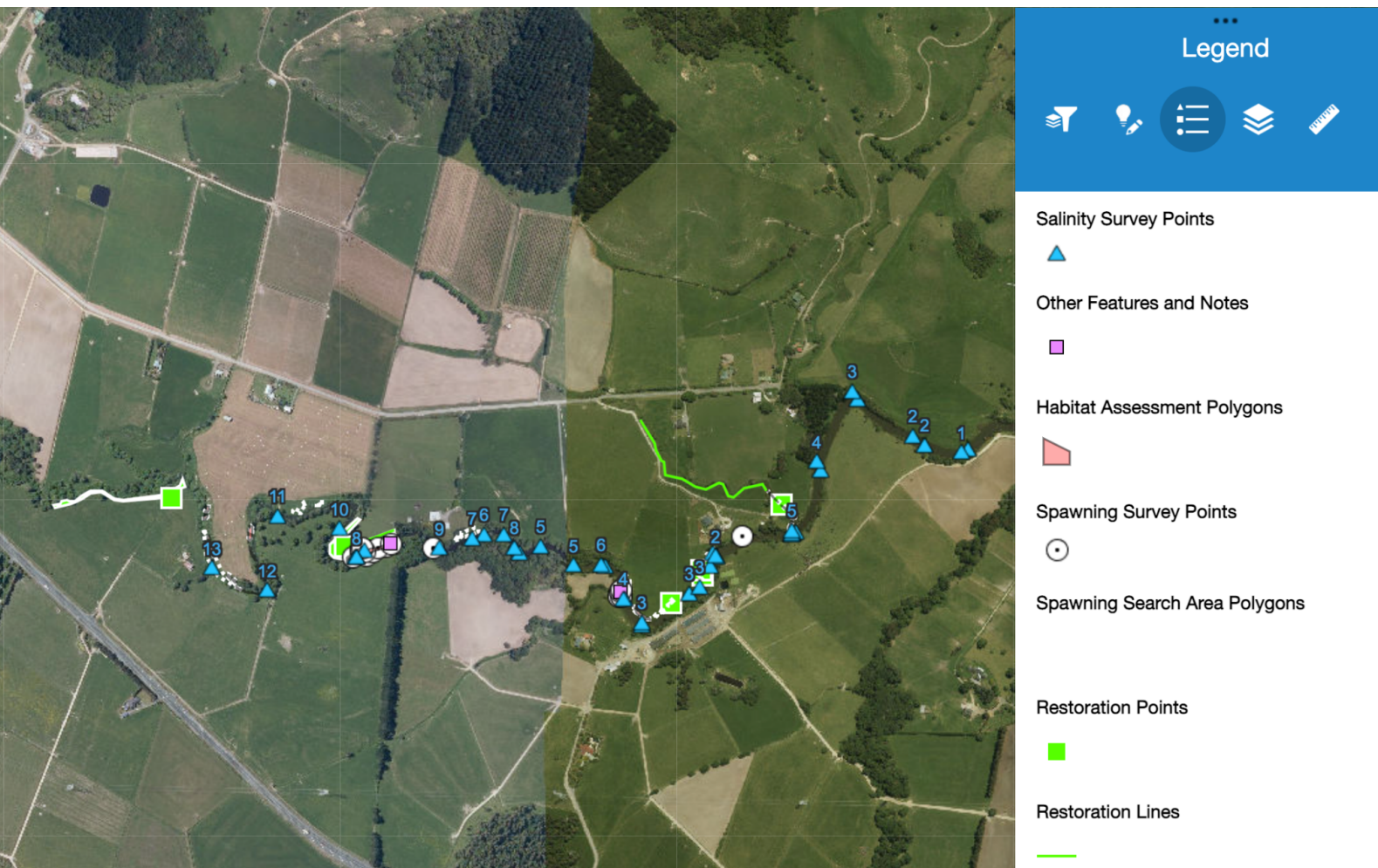


Northland Īnanga Spawning Habitat Restoration Project (NĪSHRP)



At the time of writing, the NĪSHRP is closing in on the end of its second spawning season in Northland. With funding from the Ministry for the Environment (MfE), under the Freshwater Improvement Fund, our Northland team and collaborators, including Department of Conservation (DOC), Northland Regional Council (NRC), and hapū have undertaken a total of 96 Saltwater Wedge Surveys, 67 Habitat Assessments, 69 Spawning Activity Surveys, with a total of 76 Egg Patches found containing an estimated 4,857,046 eggs.

We have contracted 600m of fencing to protect spawning zones from cattle and planted 5,700 natives across Northland. 1 ha of pest animal control has been undertaken along the Ruakākā River’s spawning zone, and we have removed hundreds of mice, rats, stoats, ferrets, weasels, possums, wild cats, and hedgehogs from the environment. Pest animal control is being rolled out across other sites across Te Tai Tokerau shortly. The project is well on track to reach, and in some cases, surpass its objectives. Demand is high from areas outside of the project scope, so we are continuing to seek ways to meet increased demand, with potential for the existing ArcGIS Online data collector apps and hub to include other regions outside of Northland.

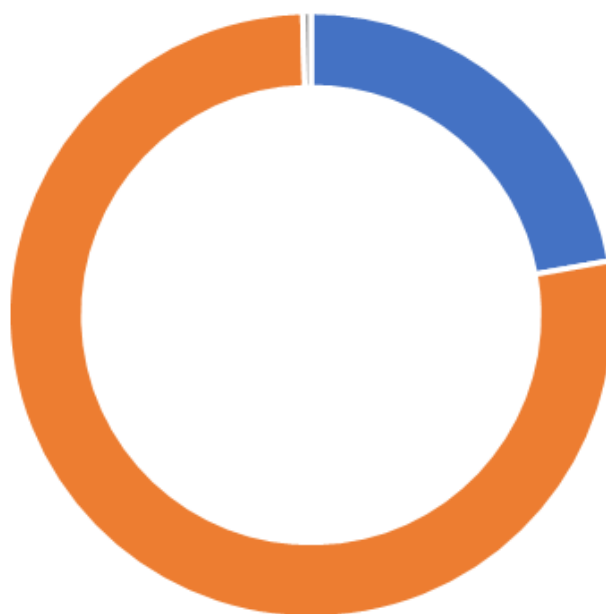


Financials

Our full financial statements and auditors report can be downloaded from the charities website by searching registration Number: CC23406 NZBN Number: 9429043001552

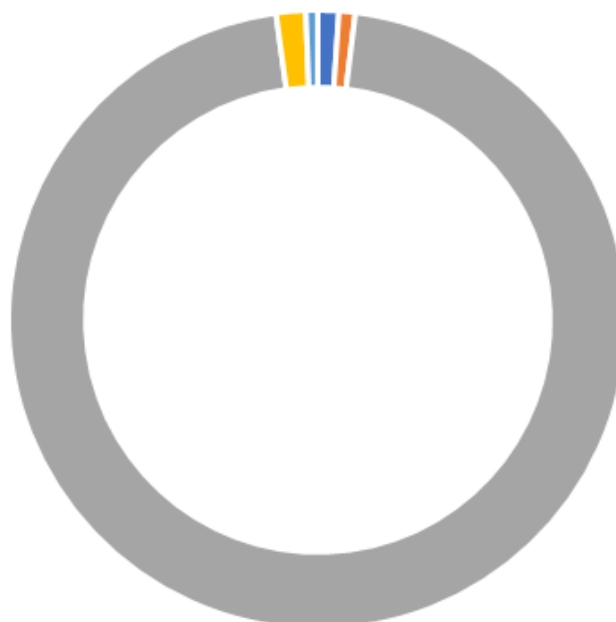
Income year end 31 March 2023

- Donations, Fundraising & Grants
- Revenue from Providing Goods & Services
- Interest, dividends and other investment revenue



Expenses year end 31 March 2023

- Expenses Related to Public Fundraising
- Volunteer Related Costs
- Costs Related to Providing Goods & Services including Consultancy Costs
- Administration & Overheads
- Depreciation & Impairment



THANK YOU TO ALL OUR SUPPORTERS

Funding: Tindall Foundation, Foundation North, Bobby Stafford-Bush Foundation, Department of Conservation (DOC), Whangārei District Council, Lotteries Community (national), Lotteries (COGS), Kaipara District Council, Fonterra, Lion Foundation, Auckland Council and local boards, Tu Manawa Active Aotearoa, Takapuna Business Association, Fortuna Foundation, Auckland Activation Fund (Auckland Unlimited), Wettie Wetsuits and Spearfishing, Far North District Council, Northland Regional Council, Reeve Davies and Associates, NZAEE (Seaweed), Ministry for the Environment, DOC Community Fund, COMET, WWF, SouthSci and Whangarei Underwater Club (dissolved)

Sponsorship: MTF Finance Whangārei, 2plus, Fullers 360, Wette, Hauraki Gulf Forum, Uru Whakaaro, Waiheke Marine Project & Dive Tutukaka!

Partnerships: Dive! Tutukaka, DOC Whangārei, Para Kore ki Tamaki, DOC, SeaLife Trust, Fullers 360, Northland Community Foundation, Auckland Council and local boards, Wai Care, National Advisory Group for Freshwater Citizen Science, Te Rangi i Taiawhiaotia Trust, Fish Forever, Seaweed, Patuharakeke te Iwi Trust Board, Whirinaki Trust, Auckland Sea Kayaks

Regional providers:

EOS Ecology, He Awa Ora, He Tai Ora, Healthy Rivers, Living Sea Education Trust, Tairāwhiti Environment Centre, Sustainable Hawkes Bay - Centre for Climate & Resilience, Tasman Bay Guardians, Friends of Te Whanganui-A Hei Marine Reserve Trust, Mountains to Sea Wellington, Nga Motu Marine Reserve Society, Te Kaahui o Rauru, Wild for Taranaki

Collaborations: Learning Journeys, EcoQuest, Te Aho Tū Roa, Enviroschools, NRC, Community Waitakere, Patuharakeke Te Iwi Trust Board, Ngāti Manu, Te Uri O Hau Environs, Tiaki Nga Wai O Hokianga, NZ Landcare Trust, Reconnecting Northland, Papa Taiao Earthcare, Mahurangi Action Group, Fonterra, Forest Bridge Trust, NorthTec, Te Henga Connection, Snells Beach Residents and Ratepayers Association, Sustainable Coastlines, Whangateau Harbourcare, NIWA, Whananaki Community Led Development Group (Te Whana O Te Nanakia Trust), Te Waiariki/Ngati Korora, Far North Surf Rescue, Goat Island Marine Discovery Centre, Ngati Kahu Social Services, NZAEE (New Zealand Association for Environmental Educators), Pacific Coast Kayaks, TriOceans, Ngati Kuri, New Zealand Underwater Association (NZUA), Ngati manu/Karetu Marae Committee, NZAEE, Auckland freediving club, Auckland Sea Shuttles, Auckland University Dive Club, Auckland Zoo, Charlie's Birds, Dolphin Underwater Club, Friends of Kurt Brehmer Walkway, Friends of Te Auaunga (Oakley) Creek, Friends of the Farm, HIWA Ltd, Kaipātiki Project, Leigh Marine Lab, Long Bay Okura Great Parks Society, Mission Bay Watersports, Motutapu Outdoor Education Centre, Nga Kaitiaki Hapori o Pourewa, Noises Trust, Ōtāhuhu Māori Wardens, Pest Free Kaipātiki, Poi Yeah, Rakino Ratepayers Association, Rotorua Trust, SUP Waiheke, Tāwharanui Open Sanctuary -Society Incorporated Te Koru Trust, Te Whau Pathway Trust, Urban Ark, Waiheke Dive, Waiheke Marine Project, Waiheke Resources Trust, Whangateau Holiday Park, Whau River Catchment Trust, Wildlife Shaun, Matapouri Holiday Units, Schnappa Rock, I Have a Dream, Freedive Aotearoa

Thank you to the Ferrier family for supporting the MTSCT Xmas function.

Accountant: Bennett & Associates

Auditor: Orbit Audit

Lawyer: Henderson Reeves Lawyers

Ways to support our work:

- *Subscribe to our newsletters:*
 - [Whitebait Connection](#)
 - [Experiencing Marine Reserves](#)
- *Volunteer with us - register on our websites*
- *Adopt a school - fund a school programme*
- *Donate \$ to the big picture through our websites*





Mountains To Sea

Conservation Trust

Nga Maunga ki te Moana Charity CC23406



Experiencing
Marine Reserves



WAI CONNECTION
TATAI KI TE WAI

mountainstosea.org.nz emr.org.nz whitebaitconnection.co.nz waiconnection.nz

