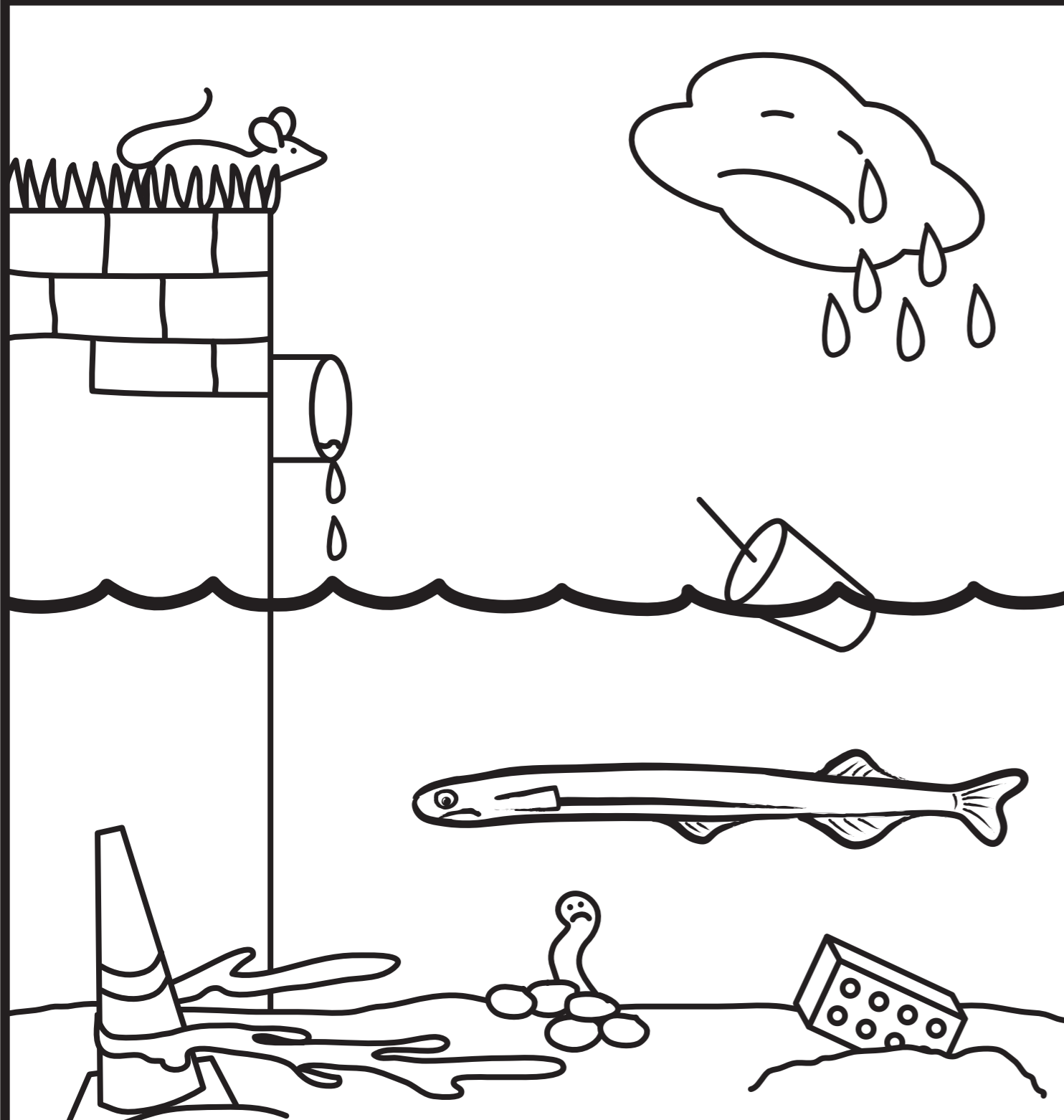
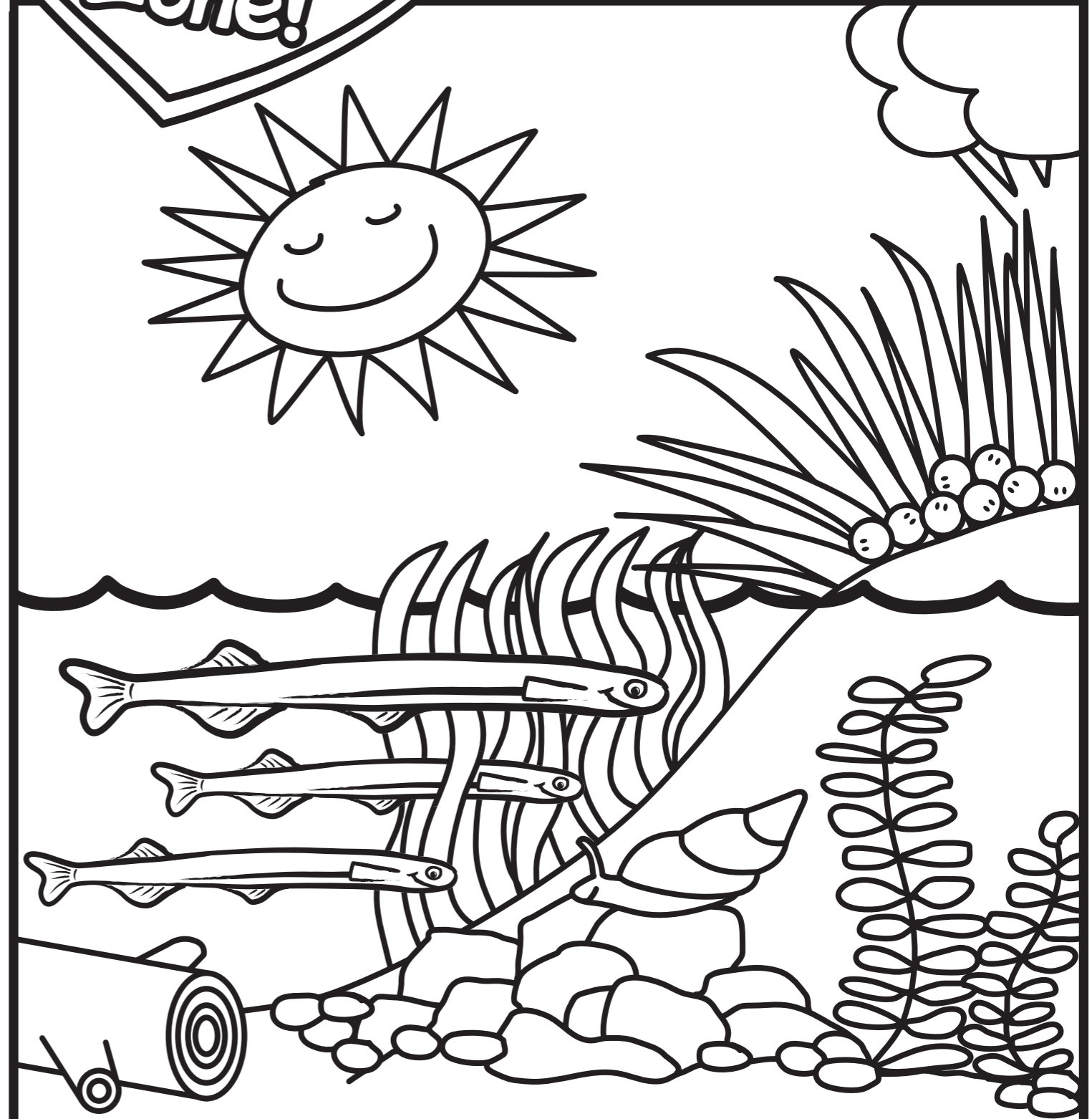


Name: _____

Where Inanga like to lay eggs...



BAD habitat



GOOD habitat

Īnanga/Whitebait – Spawning habitat colouring-in activity teachers guide



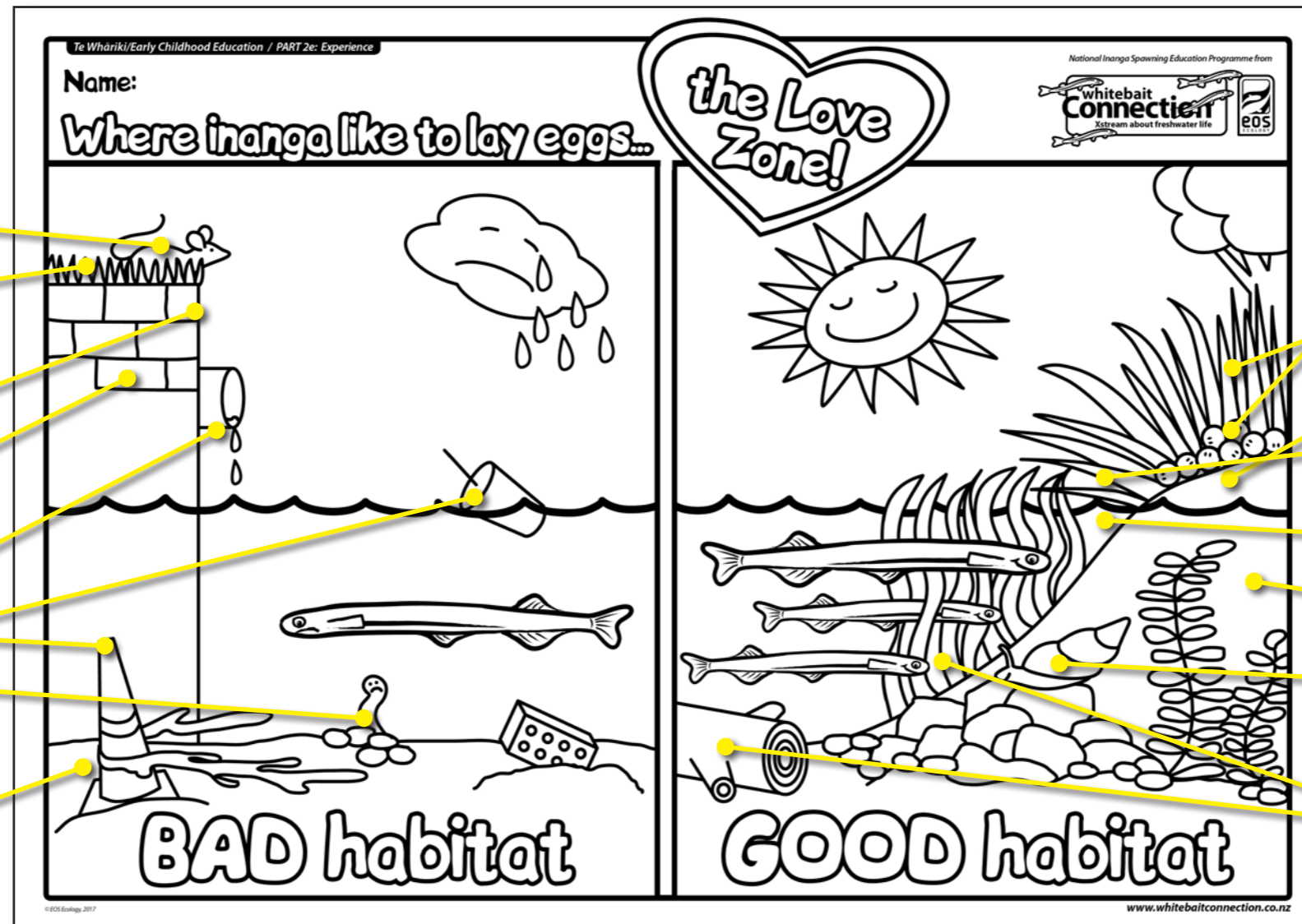
The success of an Īnanga 'Love Zone' depends on the health of the habitat (environment they like to lay their eggs in). This colouring-in activity shows what makes a good 'Love Zone' for Īnanga to spawn in.

Simple activity conversation starters...

- What can you see in the 'BAD habitat' picture? What can you see in the 'GOOD habitat' picture?
- What do you think makes a 'BAD habitat' for Īnanga to lay eggs in? What do you think makes a 'GOOD habitat' for Īnanga to lay eggs in?
- How many types of whitebait do we have in New Zealand? (answer is in introductory material, and the jigsaw activity = 5)

What makes 'BAD habitat':

- Pests present on banks as they can eat eggs. What pests eat eggs?
- Short grass that has been mowed, or banks made of bricks/concrete etc., that Īnanga can't lay their eggs in as they don't provide any protection.
- Steep banks that river can't reach at spring high tide.
- No overhanging vegetation on the rivers edge to provide shade and protection for Īnanga in the water.
- Polluted stormwater draining into river.
- Other pollution in the river e.g. rubbish.
- Not many species or numbers of invertebrates (yummy bugs) in the area. This indicates that the local habitat is generally unhealthy, and there's not much food for Īnanga waiting to spawn.
- No aquatic plants or logs in the water for Īnanga to seek shelter in/under while waiting to head onto the bank to spawn.



What makes 'GOOD habitat':

- No pests on the banks so eggs don't get eaten.
- Long grasses on the banks providing protection for eggs.
- Nice sloping banks that river can reach at spring high tide.
- Lots of overhanging vegetation on the rivers edge to provide shade and protection for Īnanga in the water.
- No polluted stormwater draining into river.
- No other pollution in the river e.g. rubbish.
- Lots of species and numbers of invertebrates (yummy bugs) in the area. This indicates that the local habitat is healthy, and there's lots of food for Īnanga waiting to spawn.
- Lots of aquatic plants and logs in the water for Īnanga to seek shelter in/under while waiting to head onto the bank to spawn.

The National Īnanga Spawning Education Programme is supported by...



We'd love to see your creations!
Email photos of you, your friends/class with your coloured pictures to us at info@whitebaitconnection.co.nz

www.whitebaitconnection.co.nz